

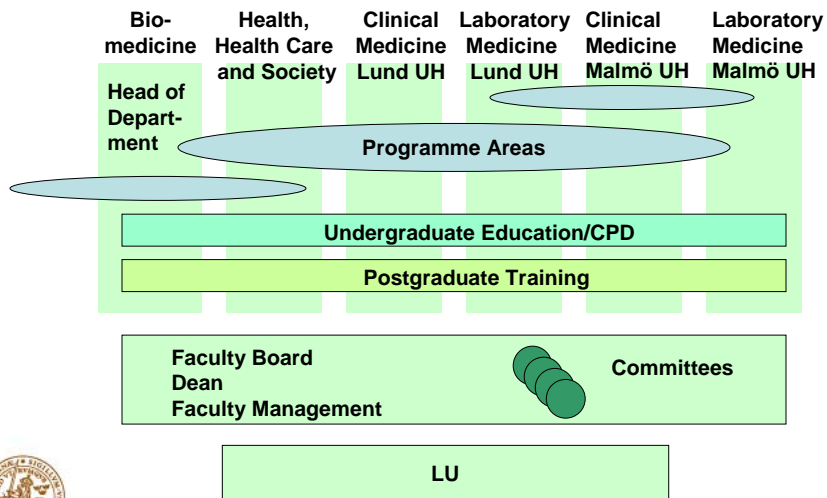


FACULTY OF MEDICINE

Lund University

A New Organization 2005

Institutional Organization as from January, 2005



FACULTY OF MEDICINE
Lund University

Biomedical Centre



- 41000 m²
- 90 research groups
- 700 scientists, post-docs, Ph.D. students, technical and administrative staff
- 500 undergraduates
- Economic turn-over SEK 500m/year (50% of faculty research and 17 % of LU research expenditure)



FACULTY OF MEDICINE
Lund University

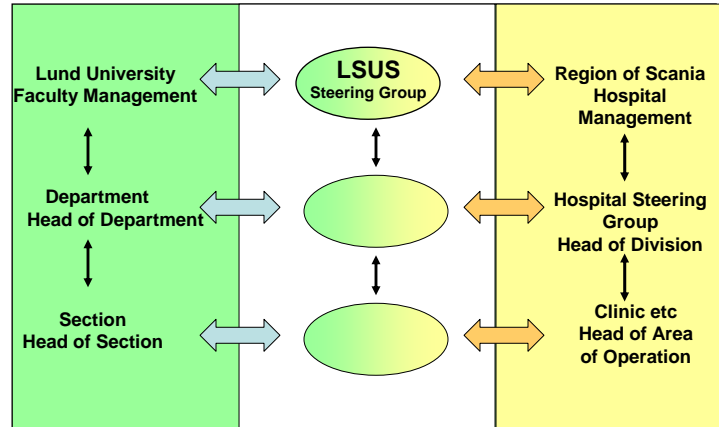
Approved Programme Areas 2004

- Stemcell Biology
- Blood and Defence
- Diabetes
- Vascular Wall
- Connective Tissue Biology and Disease
- Inflammation



FACULTY OF MEDICINE
Lund University

Interaction with the Region of Scania as from January, 2005



FACULTY OF MEDICINE
Lund University