



Faculty of Medicine – Historical Landmarks

- 1666 The Faculty of Medicine was one of the four original faculties at Lund University.
- 1768 The university hospital in Lund was established
- 1948 The Malmö University Hospital was affiliated to the Faculty of Medicine.
- 1998 Health Sciences were integrated into the Faculty of Medicine.
- 2001 The Biomedical Center (BMC) was established in direct connection with the Lund University Hospital.
- 2006 Clinical Research Centre (CRC) was established in direct connection with the Malmö University Hospital



Faculty of Medicine, Lund University

- 9 undergraduate programmes
- Postgraduate programme
- Research programmes
- Infrastructure around three centers
 - BMC in Lund
 - Health Science Center in Lund
 - CRC in Malmö
- Budget approx 250 million USD/year
- 1500 employees; 250 professors



Philosophy of Strategic Work

- Strong leadership originating from a clear strategic plan with a well grounded vision
- Emphasizes centered around identifying success factors and risks
 - Generation shift
 - Economy
 - High quality
 - Cooperation



The future of the Faculty of Medicine

STRATEGIC PLAN 2007-2011

Vision

...a faculty of medicine that is continuously breaking new ground to improve quality of life





Goals

- To offer research-related and competitive education of a high standard in the field of health care.
- To pursue medical research of a high standard resulting in innovative findings.
- To be a proactive, highly valued partner in co-operation with external parties.
- To provide a creative, compassionate and stimulating workplace and learning environment.



STRATEGIC PLAN 2007-2011

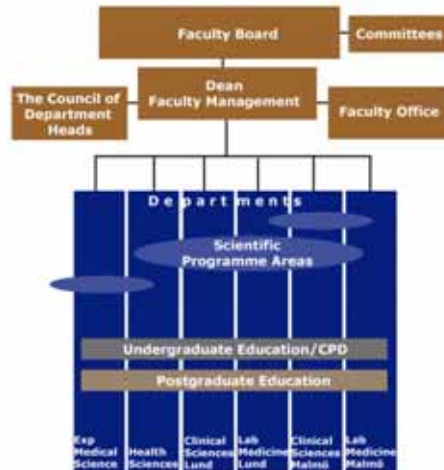


Daily Leadership Philosophy

- Simple structure allowing
 - Visions and decisions to flow into the organisation
 - Information and ideas from the organisation to reach the leaders
 - All members should have a close and clear connection to the leaders
- Clear and correct information based on openness and transparency



Faculty of Medicine Organisation

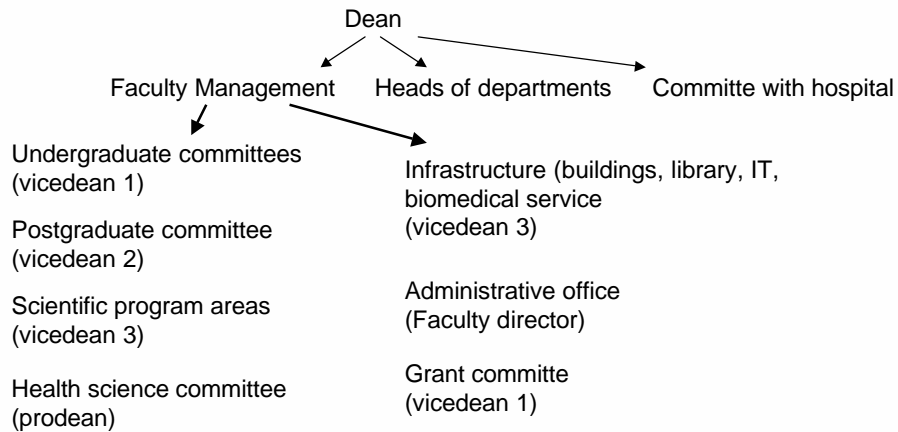


Daily leadership organisation

- Board of Management (chairman the dean)
- Dean governing group (Faculty Management)
 - Dean, prodean, vicedean for undergraduate, vicedean for postgraduate, vicedean for research and infrastructure, faculty director
- Council of heads of departments (dean)
- Council for clinical research with leaders of hospital (dean)
- Council of chairmen of undergraduate committees and deputy heads of departments for undergraduate teaching (vicedean)
- Council of chairmen of scientific program areas (vicedean)
- Council of deputy heads of departments or postgraduate teaching (vicedean)
- Committee for grants (vicedean)
- Council for Health sciences (prodean)
- Council for infrastructure (vicedean)
 - The three buildings
 - Biomedical service
 - IT and library
- Administrative office (feaculty director)
- Openness, transparency facilitated by
 - Monthly information letter
 - Regular hearings
 - Working parties for specific issues



Daily leadership organisation



Values

- A scientific approach – Integrity
- Enthusiasm – Compassion
- Curiosity – Independence
- Innovative thinking – Openness
- Reflection – A sense of responsibility
- Participation – Equal treatment
- Humour – Respect



The future of the Faculty of Medicine

STRATEGIC PLAN 2007-2011



Vision

...a faculty of medicine that is continuously
breaking new ground to improve quality of life

www.med.lu.se

